

CURRENT TRANSDUCERS

AC CURRENT TRANSFORMER/TRANSDUCER MODEL H921,H922,H923

Low Cost AC Split-Core Current Transducer

FEATURES

- The H921, H922, and H923 split-core current sensor provides accurate load trending information with a proportional output signal. Preset slide switches provide easy field setup of sensed amperage range.
- Self-gripping split-core for fast retrofit installation.
- Three factory calibrated switch selectable ranges for high resolution and installation ease.
- Mounting bracket for installation flexibility.



Model H921

APPLICATIONS

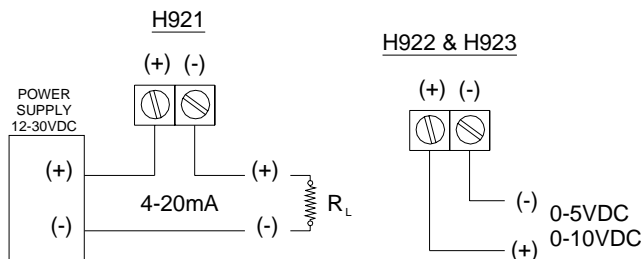
- Load Trending
- Motor Control

SPECIFICATIONS

Amperage Range See ordering table
 Output See ordering table
 Insulation Class 600 VAC rms
 Frequency 60Hz nominal
 Temperature Range -15°C to 60°C
 Humidity Range 0-95% non-condensing
 Accuracy ± 2% of reading from 10% to 100 of F.S.
 Response Time 2 sec.
 Supply Voltage ... (H921 only) ... 12-30VDC Loop powered
 Supply Current ... (H921 only) 30mA (max.)
 Humidity Range 0-95% non-condensing
 Dimensions 2.90"L x 2.58"W x 1.04"H
 Sensor opening size 1.10"L x .90"W

Accessories
 PS24-30 Universal Power Supply(30 Watts, 24Vdc)

CONNECTIONS



CONNECTIONS

NOTE: THIS IS A LOOP POWER CONNECTION

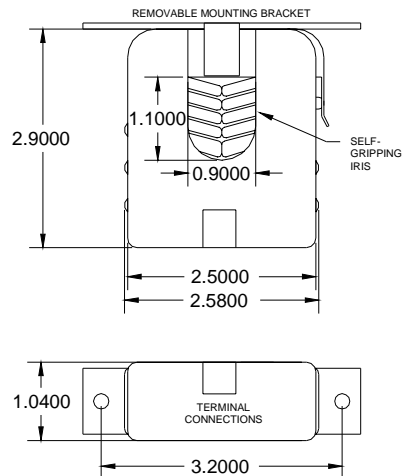
CONNECTIONS

THIS IS A SELF POWERED CONNECTION

ORDERING INFORMATION

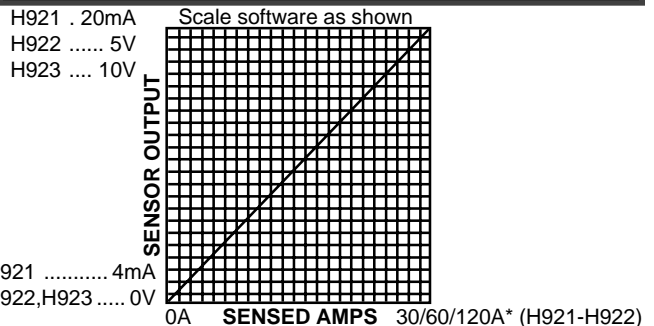
MODEL	Amperage Range	Output Type
H921	0-30/60/120A	4-20mA, Loop powered
H922	0-30/60/120A	5V, Self powered
H923	0-20/100/150A	10V, Self powered

DIMENSIONS



ALL DIMENSIONS IN INCHES

LINEAR OUTPUT



*Factory calibrated ranges selected with the amperage range switch.

CURRENT TRANSDUCERS

FLEX-CORE®
 Div. Morlan & Associates, Inc.
 6625 McVey Blvd. Columbus, Ohio 43235

WWW.FLEX-CORE.COM
 flexcore@msn.com

PHONE (614) 889-6152
 TECH. ASSISTANCE (614) 876-8308
 FAX # (614) 876-8538